

**PROVISION OF A PRIMARY
SCHOOL IN
IKAMVELIHLE,
NMBM**

OBJECTIVE

To provide the area known as Ikamvelihle (5000 households with a primary school.

MOTIVATION

Ikamvelihle is located opposite Motherwell, but separated by the busy Addo Road which results in an average of 1 fatal accident per month to junior learners. The community is against bussing junior learners

CHALLENGE

Overall Motherwell has an oversupply of schools (18 Primary & 13 Secondary Schools)

MOTIVATION FOR SCHOOL

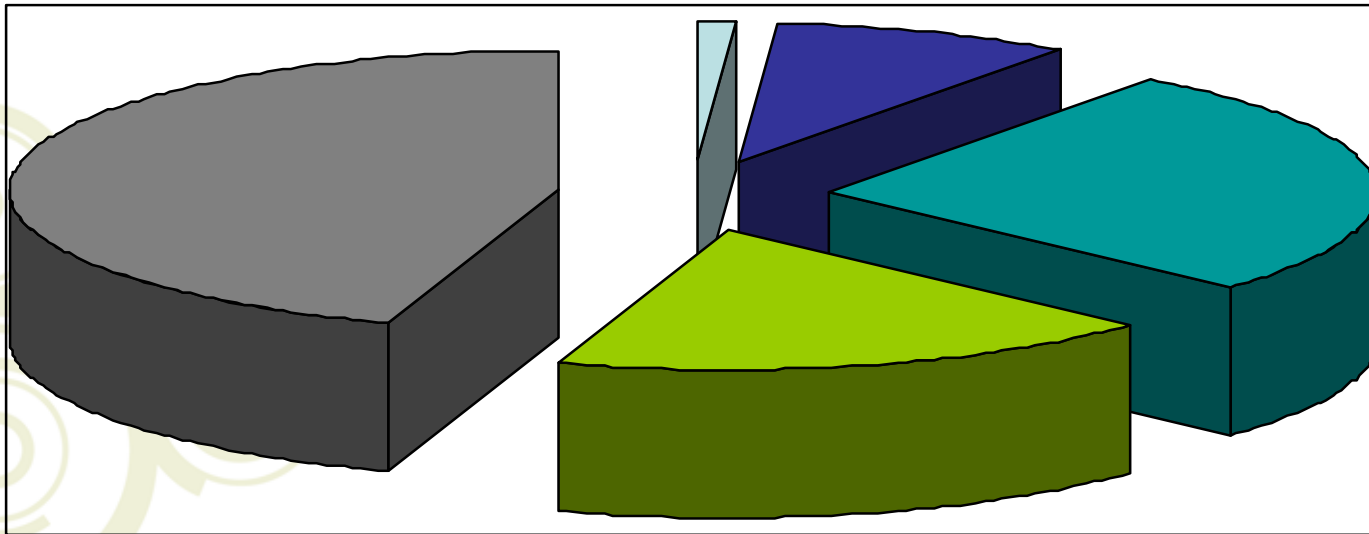
- 5000 RDP Houses
- 25 000 People
 - No primary / Secondary School
- Junior Learners and other learners have to cross a heavily dual carriage-way [Addo Road], in pursuit to school
- Average death and fatalities to pupils is one [1] child per month.

STATISTICS

- 630 Learners from Grade 1 – 6 in Ikamvelihle attend school in other parts of Motherwell



EDUCATIONAL ATTAINMENT



STAKEHOLDER ANALYSIS

- Department of Education
- Department of Public Works
- Nelson Mandela Bay Municipality
- European Union [EU]
- Community @ Ward Councillor
- Coega IDZ

Stakeholder	Level of Interest	Level of Influence	Level of Impact	Level of Support	Total
Dept. of Public Works	3	4	2	3	12
Dept. of Education	3	4	2	2	11
MURP	4	3	2	4	13
Ikamvelihle Community	4	4	4	4	16

Note : 1 = None; 2 = Minimal; 3 = Average; 4 = significant; Negative indicate those who are against

NUMBER OF CLASSROOMS REQUIRED

Grade	Age cohort [Years]	Population	Streams *
Grade 1	6	135	4
Grade 2	7	109	3
Grade 3	8	89	3
Grade 4	9	96	3
Grade 5	10	108	3
Grade 6	11	93	3
Total	-	630	18

Source : Analysis is based on a census of learners in Ikamvelihle conducted by the office of the Councillor, Ward 53.

* Size of stream is based on the assumption of 35 learners to a class.

MOTHERWELL – CURRENT ZONES



Figure 19b: Current Zoning

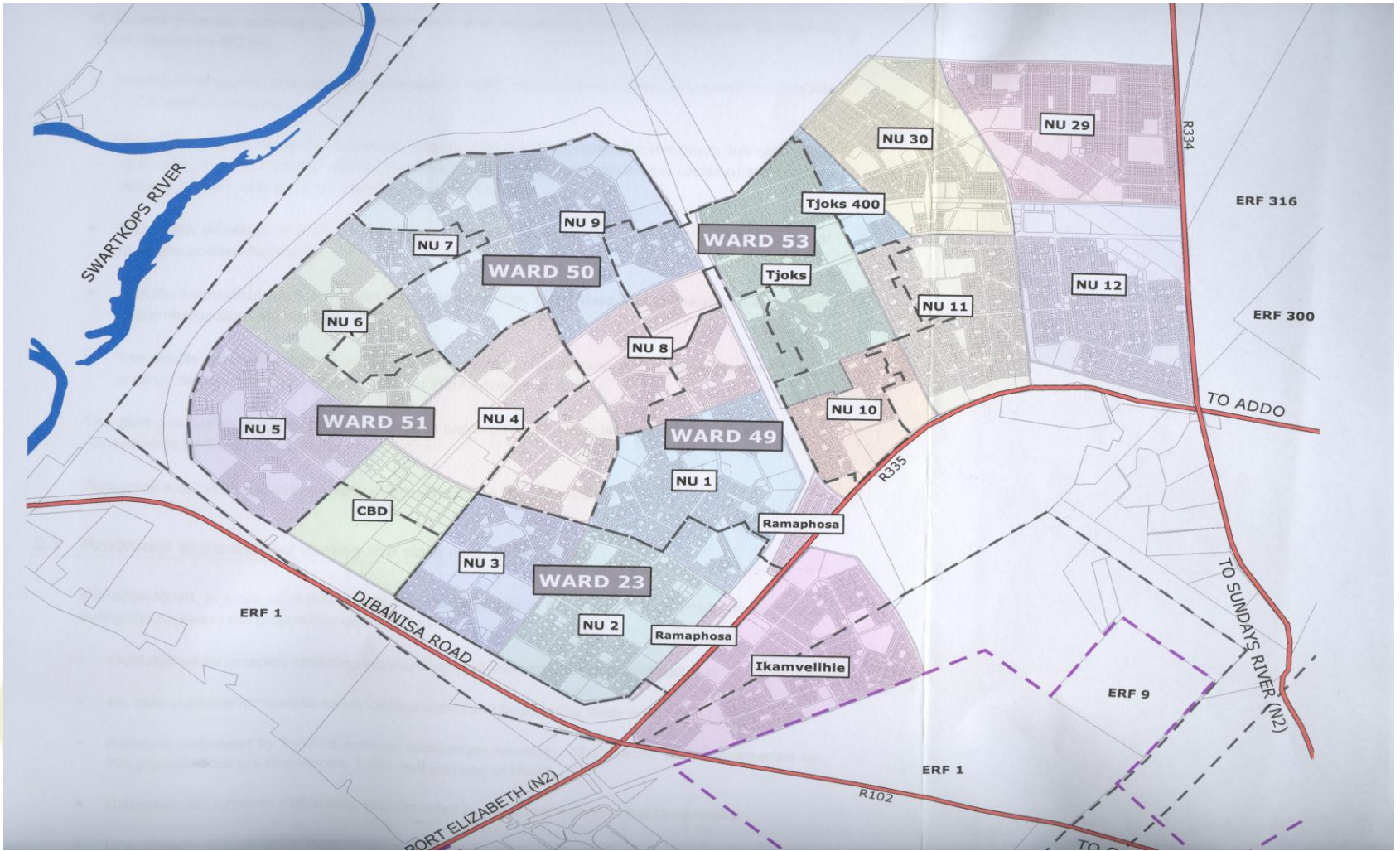
MOTHERWELL – KHULANI CORRIDOR



Figure 2k: Khulani Corridor



MOTHERWELL



MOTHERWELL – EXISTING SPORTS & RECREATION FACILITIES

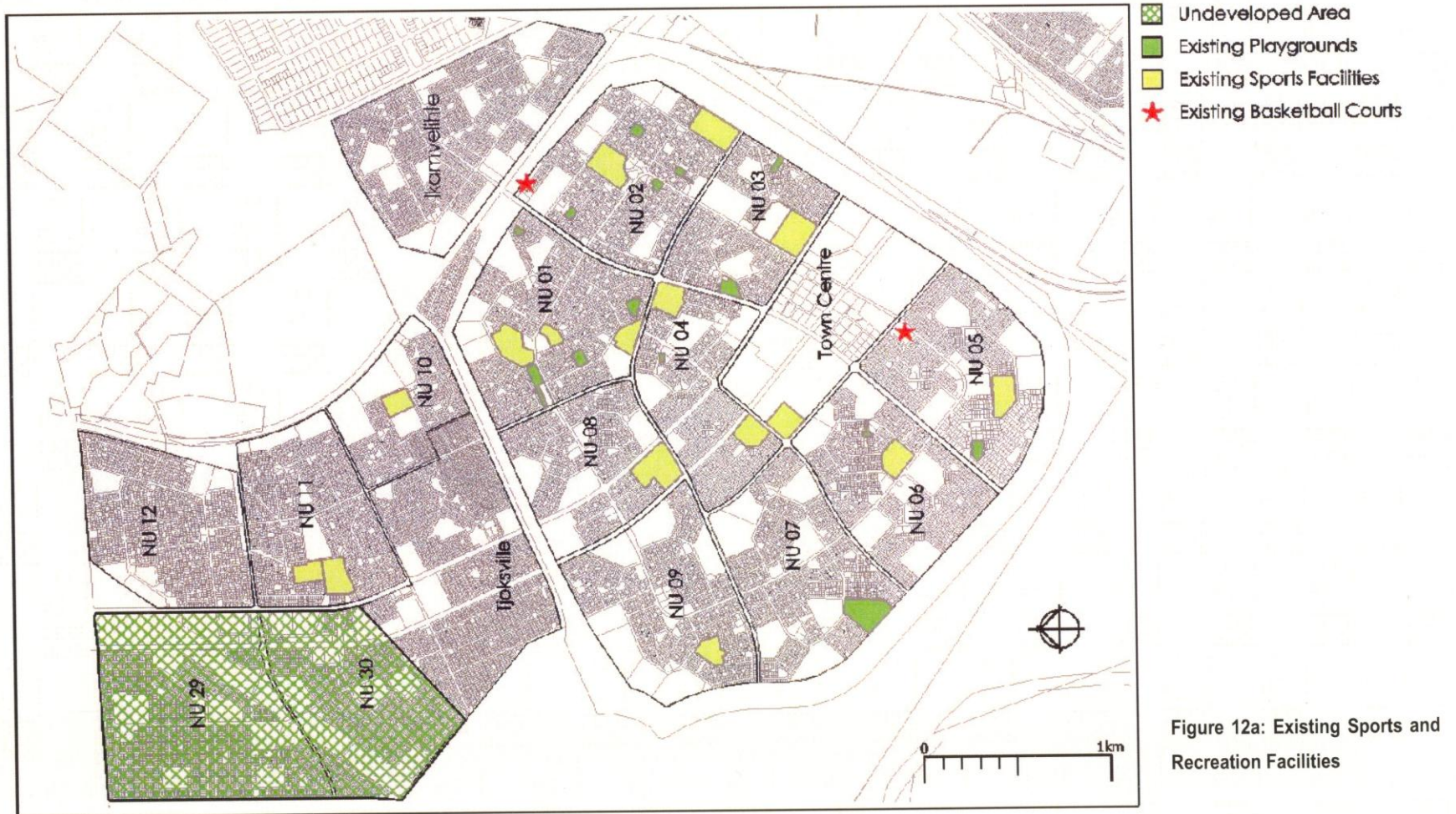
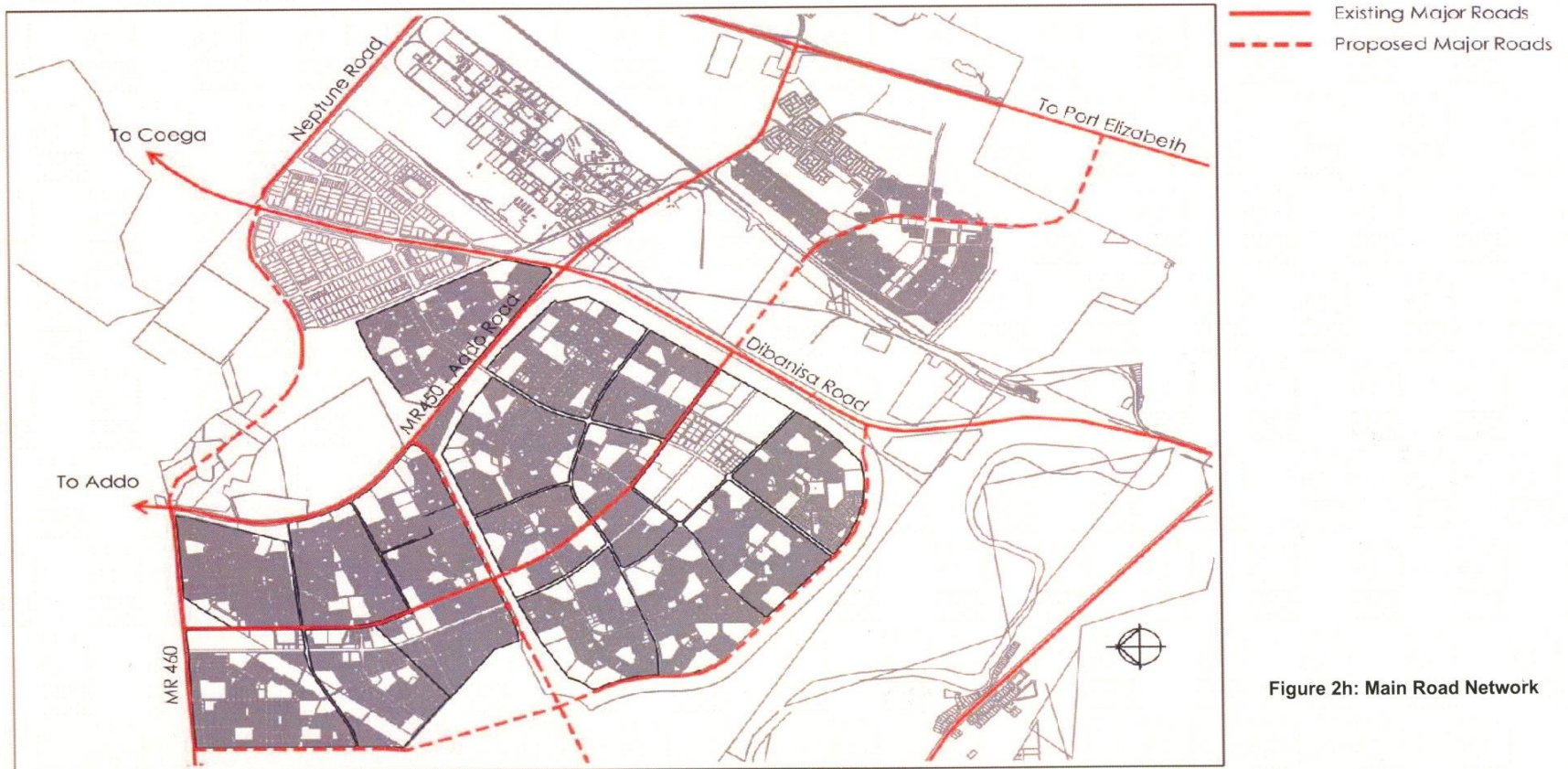


Figure 12a: Existing Sports and Recreation Facilities

MOTHERWELL – MAIN ROAD NETWORK



MOTHERWELL – EDUCATIONAL FACILITIES



MOTHERWELL – VACANT LAND



MOTHERWELL – EDUCATIONAL FACILITIES



EXERCISE – ESTABLISHMENT OF A PRIMARY SCHOOL IN IKAMVELIHLE

- Suggest the necessary site investigation and formalization processes needed to make it ready for development (land rights, etc)
- Apply PMBOK Framework to package your project (incl funding leverage)
- Propose a partnership arrangement which can implement a sustainable project
- Determine the O&M arrangements necessary in ensuring sustainability (Sec 19 MFMA etc)



THANK YOU

